

[← Back](#)

Park Day Post

1 file • Park Day School • 4 days ago • Thursday, Jan 6 at 7:03 PM • **Park Day School, Board of Trustees, External Community Members**



#3

Prepares students for participation in a democratic society.

Learning emphasizes the complexities that come from a world full of different perspectives. Social justice informs the heart of Park Day School and the school continually works to be a leader in developing students' social awareness and engagement. A key priority is that students develop a sense of agency to make a difference in the world and feel a duty to try.

Student outcome: Graduates are equipped with an understanding of who they are within the context of a wider world and see themselves as people with power to make change.

UPCOMING EVENTS

1/17

- No School - **Martin Luther King Jr. Day**

1/19

- **Middle School Student Affinity Group Sampler**

2/11

- No School - **Professional Development Day**

2/21

- No School - **Presidents' Day**

2/22 - 2/25

- No School - **February Break**

3/11

- **Read-a-Thon**

3/24 & 3/25

- No School - **Family-Teacher Conferences**

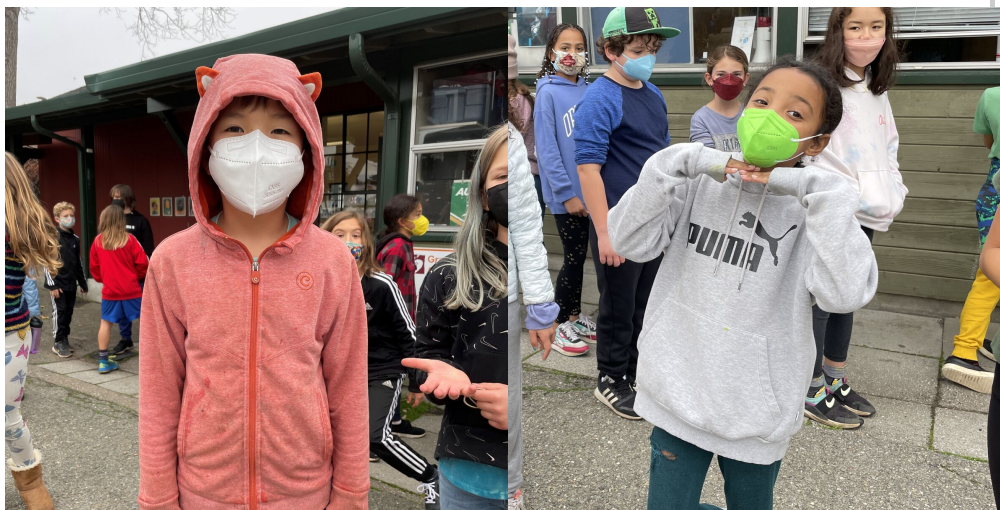
*Battered, we come to better.
Tethered by this year of yearning,
We are learning
That though we weren't ready for this,
We have been readied by it.*

-Amanda Gorman, excerpt from **"New Day's Lyric"**

Dear Park Day Families,

As we reflect on the past year, it has been a true roller coaster ride filled with atmospherically high hopes and heartbreaking lows. On this very day a year ago, we all watched in amazement as insurrectionists attacked the Capitol. In true Park Day form, a day later, our staff crafted a **collaborative statement** that affirmed our commitment and charge as a school with a mission that demands that we prepare our students to be engaged and informed participants in democracy. "May this moment be another rallying cry, reminding us of the values our community stands behind and of the courageous acts we all must take to both uphold our democracy and to push forward the fight for justice."

In solidarity,
Angela



VACCINATION SURVEY RESULTS

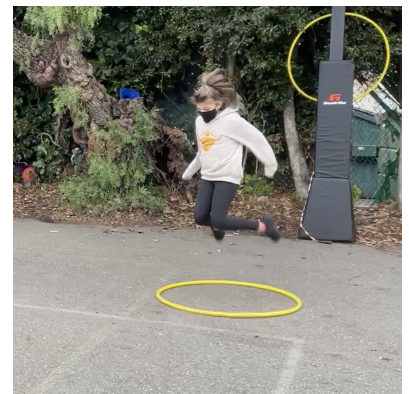
Thank you, Park Day! 95% of our community responded to the vaccination survey as of this morning. If we assume everyone who did not respond to the survey is not yet vaccinated, then 90% of our student body is fully vaccinated and has received two shots. 92% of our community has received at least one shot.

COVID UPDATE

As case rates increase across the Country due to the omicron variant, it was expected that more community members would be infected or exposed to the virus. We are grateful for all the families that tested their students before returning to campus and uploaded the results. This definitely helped keep our community safer.

We are closely tracking all cases and exposures, and at this time we are aware of 18 members of our community that have contracted COVID and 8 with close exposures in the last 3 weeks. Most of these cases took place over break and therefore the staff and students were not on campus. **Cassandra McCraw** is our Public Health Liaison and is in touch with all families affected.

On today's weekly call with schools, Alameda County Department of Public Health and Department of Education announced they have adopted the updated guidance from the California Department of Public Health. We are aligning with this guidance, which allows staff or students to end Isolation after 5 days if they are symptom free and receive a negative antigen test.



REMINDERS

Parking for Drop-Off & Pick-

ISOLATION (STAFF and STUDENTS)

- **Isolation is for people who test positive for COVID-19 or who have COVID-19 Symptoms—regardless of vaccination status**
- **Updated CDPH Guidance Applies to staff AND students**
 - **Stay home** (PDF) for at least 5 days.
 - Isolation can end after day 5 if symptoms are not present or are resolving **and** a diagnostic specimen* collected on day 5 or later tests negative.
 - If unable to test or choosing not to test, and symptoms are not present or are resolving, isolation can end after day 10.
 - If fever is present, isolation should be continued until fever resolves.
 - If symptoms, other than fever, are not resolving continue to isolate until symptoms are resolving or until after day 10.
 - Wear a well-fitting mask around others for a total of 10 days, especially in indoor settings
 - ***Antigen test preferred.**



Alameda County
Health Care Services Agency



Alameda County Public Health Department
Celebrating Healthy People in Healthy Communities



ALAMEDA COUNTY
OFFICE OF EDUCATION
L. K. Morro, Superintendent

2

If your student tests positive, please contact Cassandra and let the school know as soon as possible. In addition, we are still requiring any student with a household exposure to quarantine for at least 5 days, regardless of vaccination status.

At this time when tests are in short supply, we feel very fortunate to be able to offer our students and staff twice weekly PCR tests. Some of the results from Tuesday's on campus testing are still pending; those that we have received are all negative. We have had 2 students on campus this week that have later tested positive for COVID. We tested all students in the affected grades today, and all tests were negative.

Reminder of Infectious Period

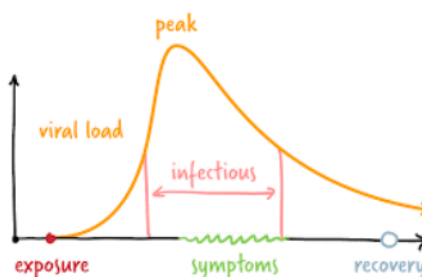
Identifying the dates the positive case was on campus while infectious

For Symptomatic Cases

- 2 days prior to symptom onset
- 5-10 days after symptom onset

For Asymptomatic Cases

- 2 days prior to test date
- 5-10 days after test date



If your student comes down with any COVID symptoms, we request that you keep them home from school and get them tested. At home antigen tests are ok for screening. We received this important information about **rapid antigen COVID tests** from the California Department of Public Health (CDPH) this week.

Masking is a critical tool in keeping our community safe. As we shared over the weekend, please have your student wear a KN95/N95/KF94 mask or practice double masking with a surgical mask with a cloth mask on top. We urge you to refer to California Department of Public Health's recently updated

Up

Please use the drive through lane when possible. If you choose to walk into campus, be sure to park legally and courteously for the sake of our neighbors.

Dismissal Pick-Up Windows

Please respect the pick-up window times. If you arrive early or your student isn't ready when you pull through, please drive back out and circle the block to keep the carpool lane moving.

2021-2022 School Day

Before-school program:

- 7:30 am – school start (no charge)

Grades K – 3:

- 8:45 am– 3:15 pm

Grades 4 & 5:

- 8:30 am–3:15 pm

Grades 6 – 8:

- 8:30 am–3:30 pm

Wednesday early dismissal

- Grades K-5: 2:15 pm
- Grades 6-8: 2:35 pm

After School Activities

Program:

- From school dismissal– 6:00 p.m.

Gate Codes

- 42nd Street Gate:
 - #SMILE (#76453)
- 43rd/44th Street Gates:
 - SMILE* (76453*)

Customize your

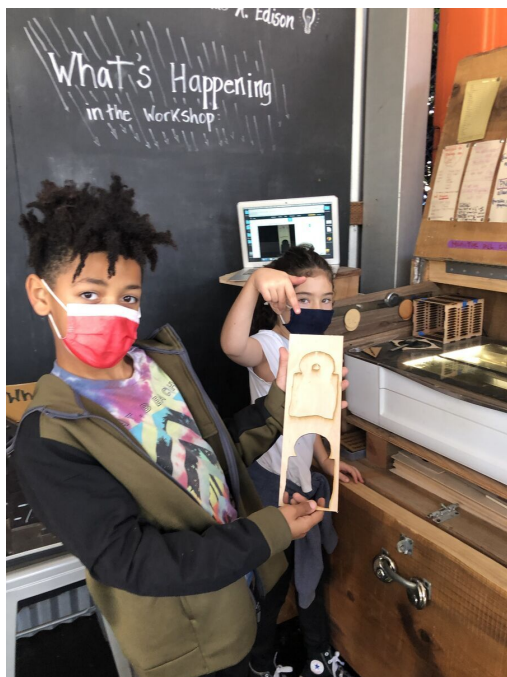
ParentSquare notification settings so you get

recommendations for proper masking. It contains lots of useful information, including links to **CDC lists of masks** and **tested masks**.

Take care,
Jennifer Cooper
Pandemic Coordinator

information the way that suits you best!

Check out all the **Opt-In Parent-to-Parent & Community Groups** on ParentSquare and find folks with similar interests!

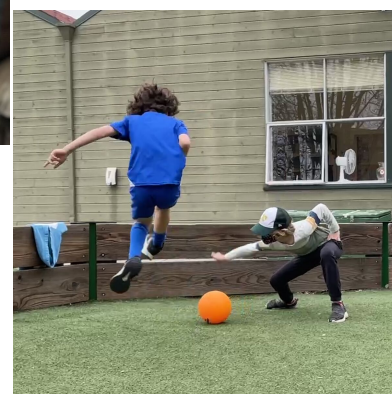


TIMELY REMINDERS

If your family's health insurance changed in the new year, **please update the attached PMH COVID Testing form we have on file for your student(s)** and return to the Main Office or email to them at **parkdayschool@parkdayschool.org**. When filling out the form, here are some keys to remember:

- Do not date the form
- Do not select any of the test options
- Handwrite your new insurance information at the top

It feels like such a privilege to have on campus testing twice a week. **Thank you for your partnership in maintaining the health and safety of our school community!**





ANNUAL FUND CAMPAIGN

Support of the Annual Fund continues to grow!

Gifts to the Annual Fund reached \$330,000 over Winter Break with gifts, employer matching gifts, pledges, stock transfers, and a car donation that we'll received the proceeds from, all flooding in before the clock struck 12 o'clock on New Year's Eve. What a strong start to 2022! **We deeply appreciate the members our community who have answered the call to contribute to the campaign!** Thank you!



If you haven't made a gift to the Annual Fund, please join us. **Here are some ways you can maximize the impact of your giving:**

- Make a **gift online** or by mail to the school
- Make a **pledge** to be fulfilled by June 1st, 2022
- Take advantage of your employer's matching gift program
- Donate a **gift of stock**
- Donate the **vehicle** that's been taking up space in the garage

I recently asked a parent what inspires them to give to the Annual Fund and this was their response: *"Our family makes Park Day our philanthropic priority **so that the school can be amazing for our kids right now and can impact more families in the future.**"* I also heard: *"Knowing that **every gift helps enhance the program and supports our teachers** makes us feel great about our investment."* They're absolutely right--each and every gift matters and makes a difference. **Your generosity is deeply appreciated!**

With gratitude,
Chris Miller
Director of Development



COMMUNITY NEWS & EVENTS

DJA Presents "Engaging the Structural Components of the Homelessness Crisis"

The Diversity & Justice Alliance invites you to join them on Tuesday, January 11, at 6:45 pm for a virtual workshop on the homelessness crisis. This event will be lead by Park Day parents Cornelia Sylvester (Leilani, 6th, Sylvia, '21, Julia, '19) and Laura Goldberger (Zach, '21, Finnean, '18) on Zoom. [Click here for more information and to RSVP!](#)

Coffee with Angela

Our Coffee with Angela events were a highlight of the fall, and we look forward to continuing this new program in 2022. Given the current surge of the omicron variant, though, it seems prudent to not gather in January. We will announce the next date in a future Park Day Post, so watch this space for updates!

Park Day Music Teacher Releases New Album!

Our rockstar middle school music teacher, Miguel Martinez, has released a new album titled *In The Moment*, and it's *wonderful.* Here are some links so you can check it out, too: Website: miguelitomartinez.com Album: [*In The Moment*](#) on bandcamp

Happy New Year and happy listening!



Open Call for Student & Staff Submissions to the IYKMM Podcast Mixtape!

The *If You Knew Me Mondays* Podcast Club is working on their 1st mixtape episode! This special episode will be a compilation of student and staff musical compositions, and we'd love to include your student's submission! If they're interested in participating, **please use this form to share their content** by Friday, January 21st. We can't wait to hear from our talented and creative students and staff!



VOLUNTEER OPPORTUNITIES

Morning Drop-Off

It takes a lot of us to get students safely through drive through drop-off efficiently, so we are asking those who are able and willing to please lend a hand. **Please click here to be among the first volunteer in the new year!** Thank you for sharing your time with us... we appreciate your teamwork!

